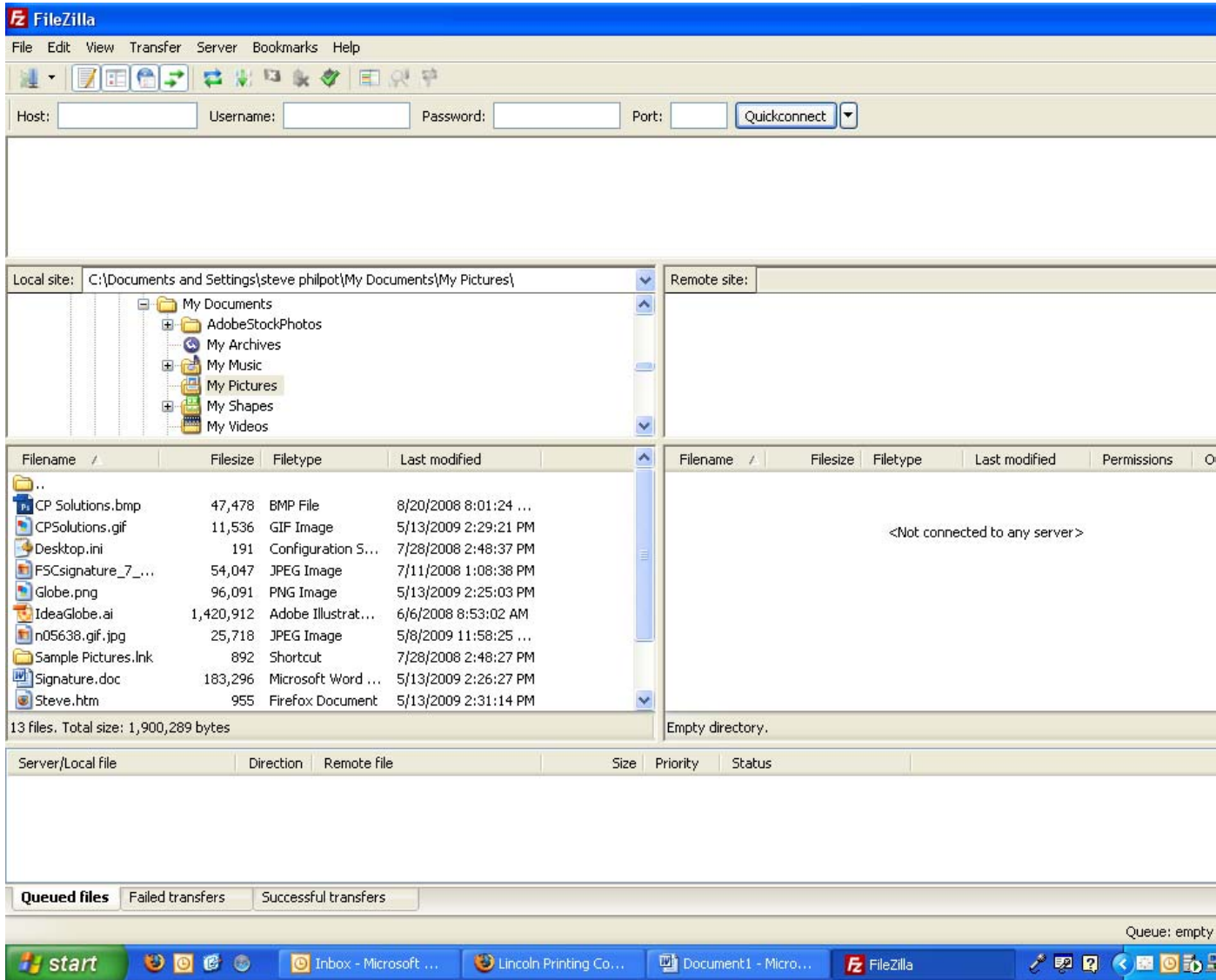
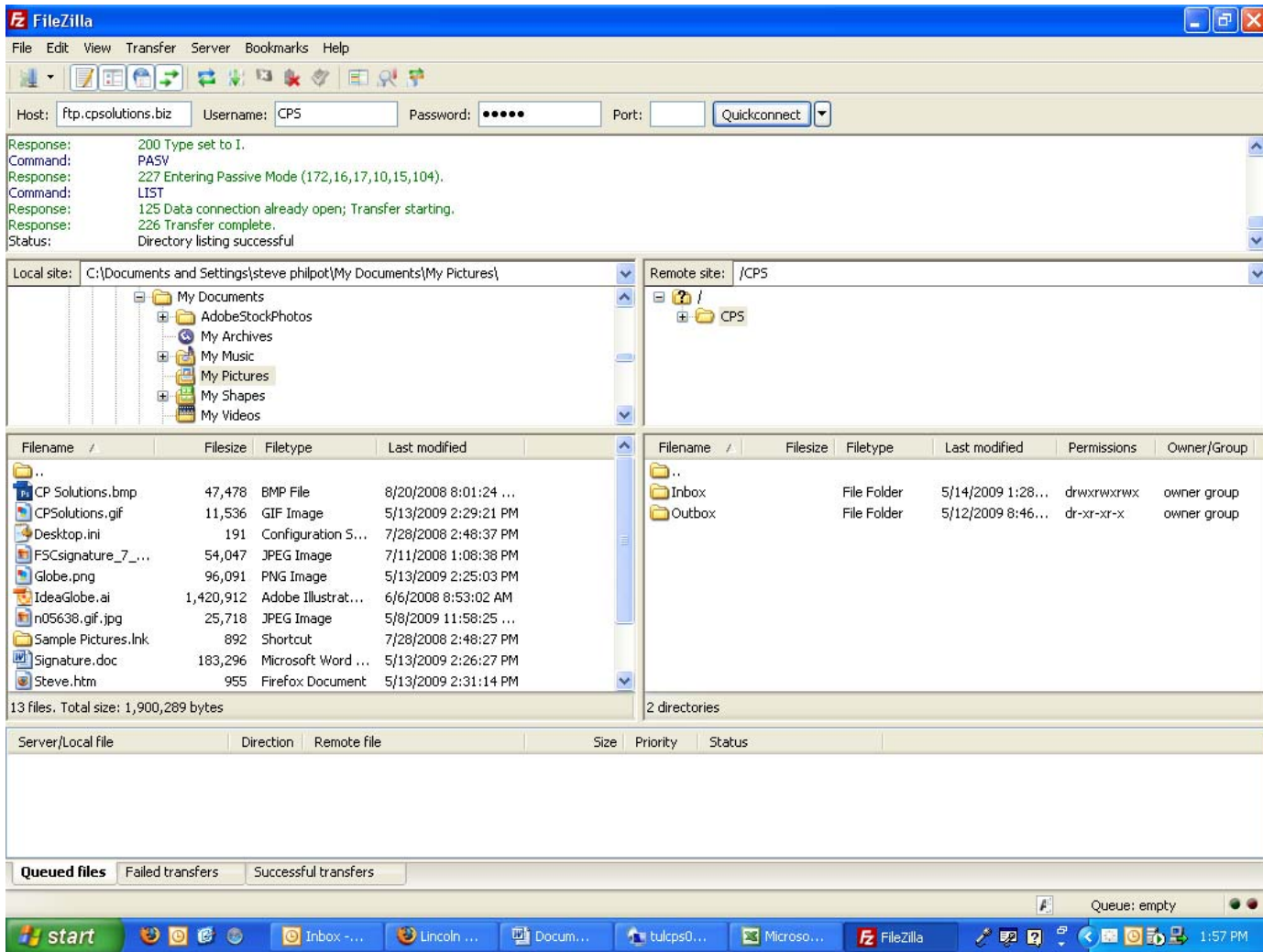


CP Solutions FileZilla Instructions



Step 1: Open FileZilla and this screen will appear. In the host box type <ftp.cpsolutions.biz>, in the username box type: **CPS** in the password box type: **print**, then click quick connect.



Find your file on the left hand side of the program by browsing through your folders. Find your file and drag and drop the folder into the CPS inbox, and your done.

You will know your upload was successful by checking the successful transfers tab.

The screenshot shows the FileZilla interface with the following details:

- Host:** ftp.cpsolutions.biz | **Username:** CPS | **Password:** [masked] | **Port:** [empty] | **Quickconnect** button
- Local site:** C:\Documents and Settings\steve philpot\My Documents\My Pictures\
 - My Documents
 - AdobeStockPhotos
 - My Archives
 - My Music
 - My Pictures
 - My Shapes
 - My Videos
- Remote site:** /CPS
 - CPS
 - Inbox
 - Outbox
- Local File List:**

Filename	Filesize	Filetype	Last modified
..			
CP Solutions.bmp	47,478	BMP File	8/20/2008 8:01:24 ...
CPSolutions.gif	11,536	GIF Image	5/13/2009 2:29:21 PM
Desktop.ini	191	Configuration S...	7/28/2008 2:48:37 PM
FSCsignature_7_...	54,047	JPEG Image	7/11/2008 1:08:38 PM
Globe.png	96,091	PNG Image	5/13/2009 2:25:03 PM
IdeaGlobe.ai	1,420,912	Adobe Illustrat...	6/6/2008 8:53:02 AM
n05638.gif.jpg	25,718	JPEG Image	5/8/2009 11:58:25 ...
Sample Pictures.lnk	892	Shortcut	7/28/2008 2:48:27 PM
Signature.doc	183,296	Microsoft Word ...	5/13/2009 2:26:27 PM
Steve.htm	955	Firefox Document	5/13/2009 2:31:14 PM
- Remote File List:**

Filename	Filesize	Filetype	Last modified	Permissions
..				
Inbox		File Folder	5/14/2009 1:28...	drwxrwxrwx
Outbox		File Folder	5/12/2009 8:46...	dr-xr-xr-x
- Transfer Queue:**

Server/Local file	Direction	Remote file	Size	Priority
CPS@ftp.cpsolutions.biz				
C:\Documents and Settings\...	-->>	/CPS/Inbox/IdeaGlobe.ai	1,420,912	Normal
C:\Documents and Settings\...	-->>	/CPS/Inbox/IdeaGlobe.ai	1,420,912	Normal
C:\Documents and Settings\...	-->>	/CPS/Inbox/CP Solutions.bmp	47,478	Normal
- Transfer Status:** Queued files | Failed transfers | **Successful transfers (3)**